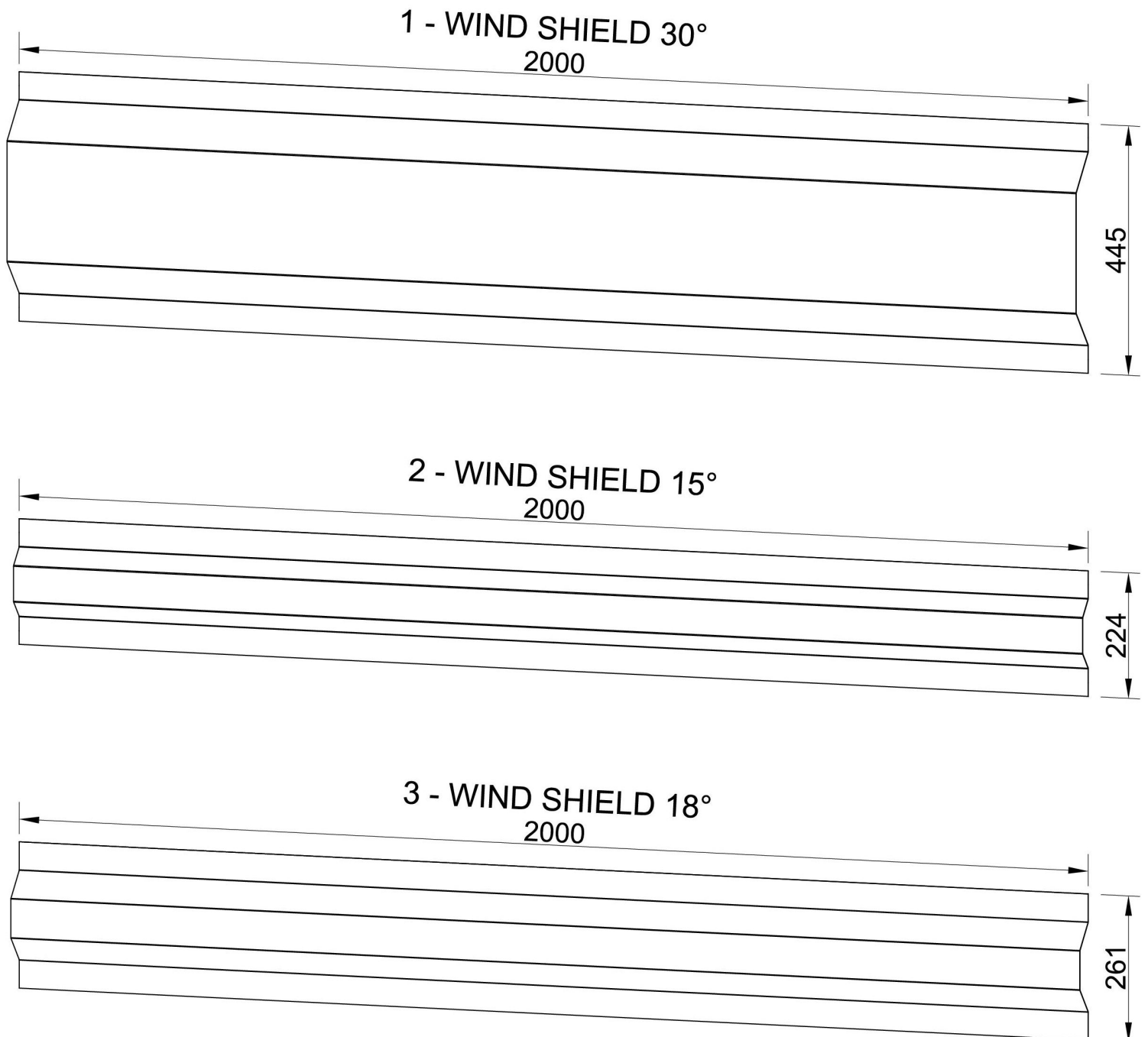


# WIND SHIELDS

## PRODUCT DESCRIPTION

Lightweight, aluminum wind shields for our ballast systems are designed to prevent the structures against the negative influence of strong winds. Assembling them using self-drilling screws makes the job quick and results in a years of reliability.

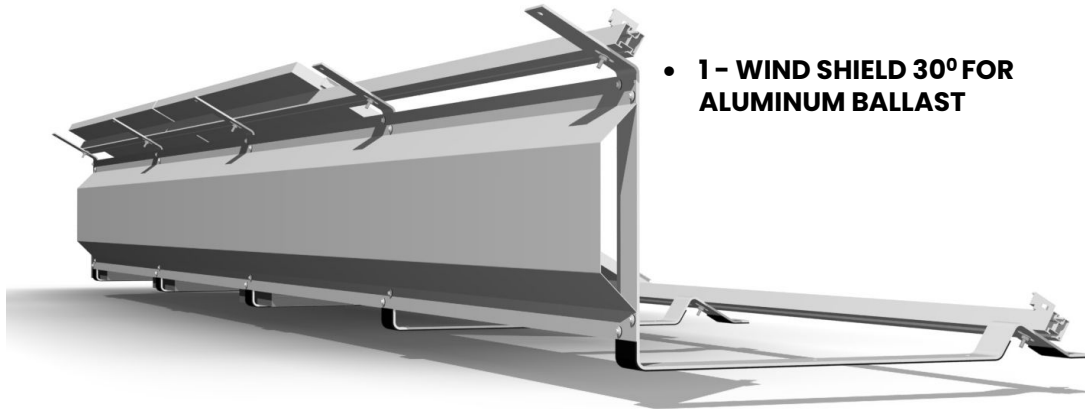


# WIND SHIELDS

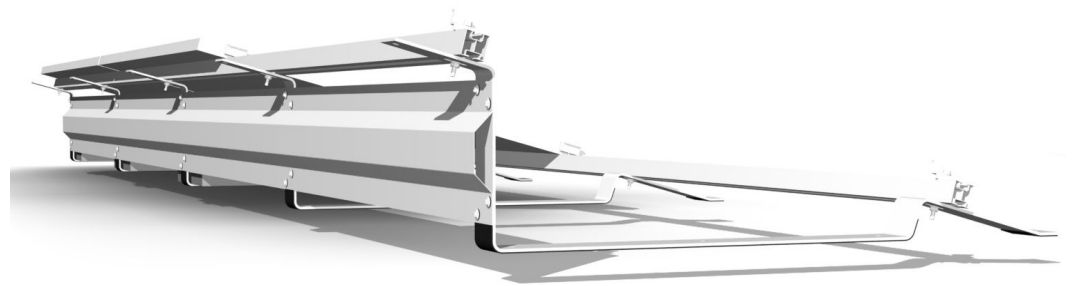
## TECHNICAL SPECIFICATIONS

Product: 1-Wind shield 30°;  
2-Wind shield 15°;  
3-Wind shield 18°;

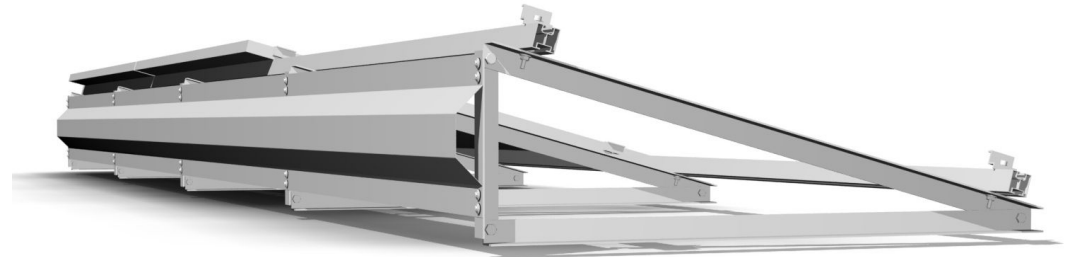
Material: Aluminum EN AW-5754 H111  
Height: 1-445 mm; 2-224 mm; 3-261 mm  
Length: 2000 mm  
Thickness: 1 mm  
Fastening: Self-drilling screw Bi-metal / EJ



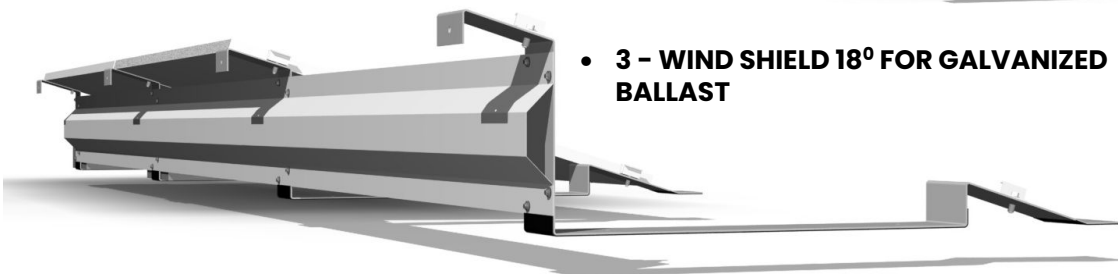
- **1 - WIND SHIELD 30° FOR ALUMINUM BALLAST**



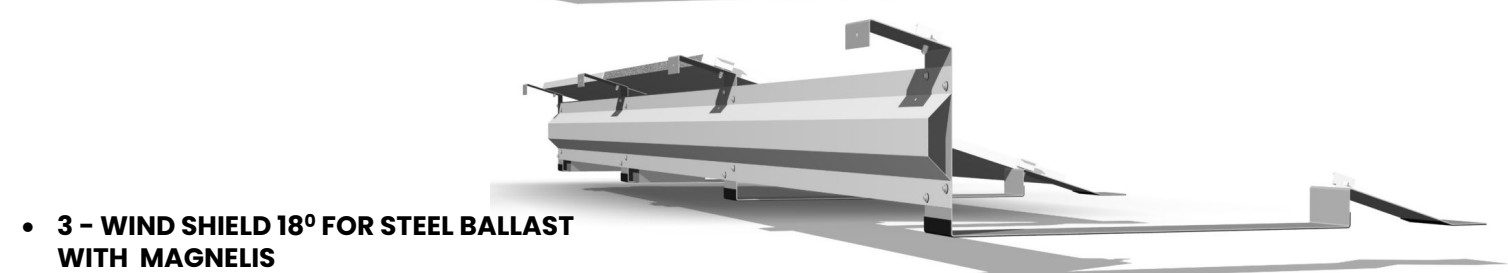
- **2 - WIND SHIELD 15° FOR ALUMINUM BALLAST**



- **WIND SHIELDS FOR ALUMINUM PV TRIANGLES**



- **3 - WIND SHIELD 18° FOR GALVANIZED BALLAST**



- **3 - WIND SHIELD 18° FOR STEEL BALLAST WITH MAGNELIS**